

Base de données vautours : International **B**earded vulture **M**onitoring -IBM



Asters
Conservatoire
d'espaces naturels
Haute-Savoie

www.gyp-monitoring.com



INTERNATIONAL
BEARDED VULTURE MONITORING

User

Password

login

[Downloads](#) [Administrator](#) [Contact](#) [Monitoring](#) [Vulture Conservation Foundation](#)

Startseite

OUR NETWORK IS A UNIQUE COLLABORATION OF:

IBM-PARTNERS



Vautours en Baronnies



Accès grand public (www.gyp-monitoring.com) :



- Listes des individus réintroduits, nés en nature.
- Résultats de reproduction à l'échelle alpine.
- Fiche de marquage des gypaètes.
- Guide d'identification
- Protocole de suivis
- ...

ALPINE BEARDED VULTURE REPRODUCTION 1995 - 2021:

Season	1995	1996	1997	1998	1999	2000	2001	2002	2003	2004	2005	2006	2007	2008	2009	2010	2011	2012	2013	2014	2015	2016	2017	2018	2019	2020	2021
Potential territories	1	1	2	3	4	5	6	9	11	17	15	19	19	16	18	20	22	27	29	28	34	44	52	53	58	61	72
Territorial pairs	1	1	1	2	4	4	5	9	9	14	14	13	18	16	14	19	21	22	28	27	30	38	46	48	54	56	69
Checked pairs	1	1	1	2	4	4	5	9	8	10	13	12	17	15	14	19	21	21	27	27	30	37	46	47	54	54	68
Breeding pairs	0	1	1	2	4	4	5	6	7	7	8	9	13	15	13	18	20	18	25	24	28	34	42	44	51	53	61
Fledglings	0	0	1	2	1	3	1	5	2	5	7	6	10	7	9	10	14	10	16	19	20	25	31	29	39	37	44
Failures	0	1	0	0	3	1	4	1	5	2	1	3	3	8	4	8	6	8	9	5	8	9	11	15	11	16	17
Breedings success	0.00	0.00	1.00	1.00	0.25	0.75	0.20	0.83	0.29	0.71	0.88	0.67	0.77	0.47	0.69	0.56	0.70	0.56	0.64	0.79	0.71	0.74	0.74	0.66	0.76	0.70	0.72
Productivity	0.00	0.00	1.00	1.00	0.25	0.75	0.20	0.56	0.25	0.50	0.54	0.50	0.59	0.47	0.64	0.53	0.67	0.48	0.59	0.70	0.67	0.68	0.67	0.62	0.72	0.69	0.65

IBM-STANDARDS FOR REPRODUCTION STATISTICS:

Potential territory	Area occupied by at least 2 birds showing territorial behaviour → all territories entered in the IBM-database
Territorial pair ¹	Pair ¹ occupying a territory with at least one nest → territories with nest or egg-lay date entered in the IBM-database
Checked pair ¹	Pair ¹ monitored during the breeding season → territories with nest or egg-lay date entered in the IBM-database → age classification: subadult (5. / 6. cy) or adult (≥ 6. cy)
Breeding pair ¹	Cases of verified egg-laying → date of egg-laying entered in the IBM-database
Breeding success	$\frac{\text{fledglings}}{\text{breeding pairs}}$
Productivity	$\frac{\text{fledglings}}{\text{checked pairs}}$

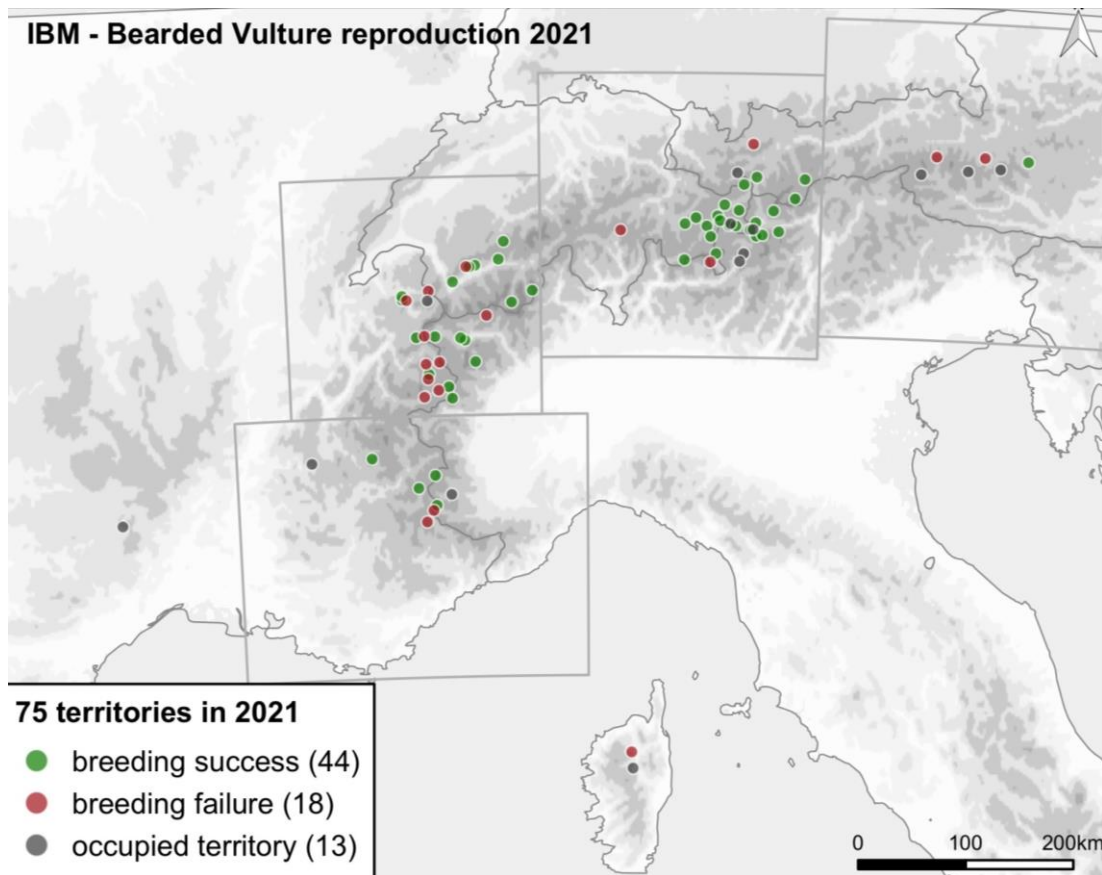
¹ Definition of a pair: At least two birds occupying a territory with at least one nest or confirmed fledge

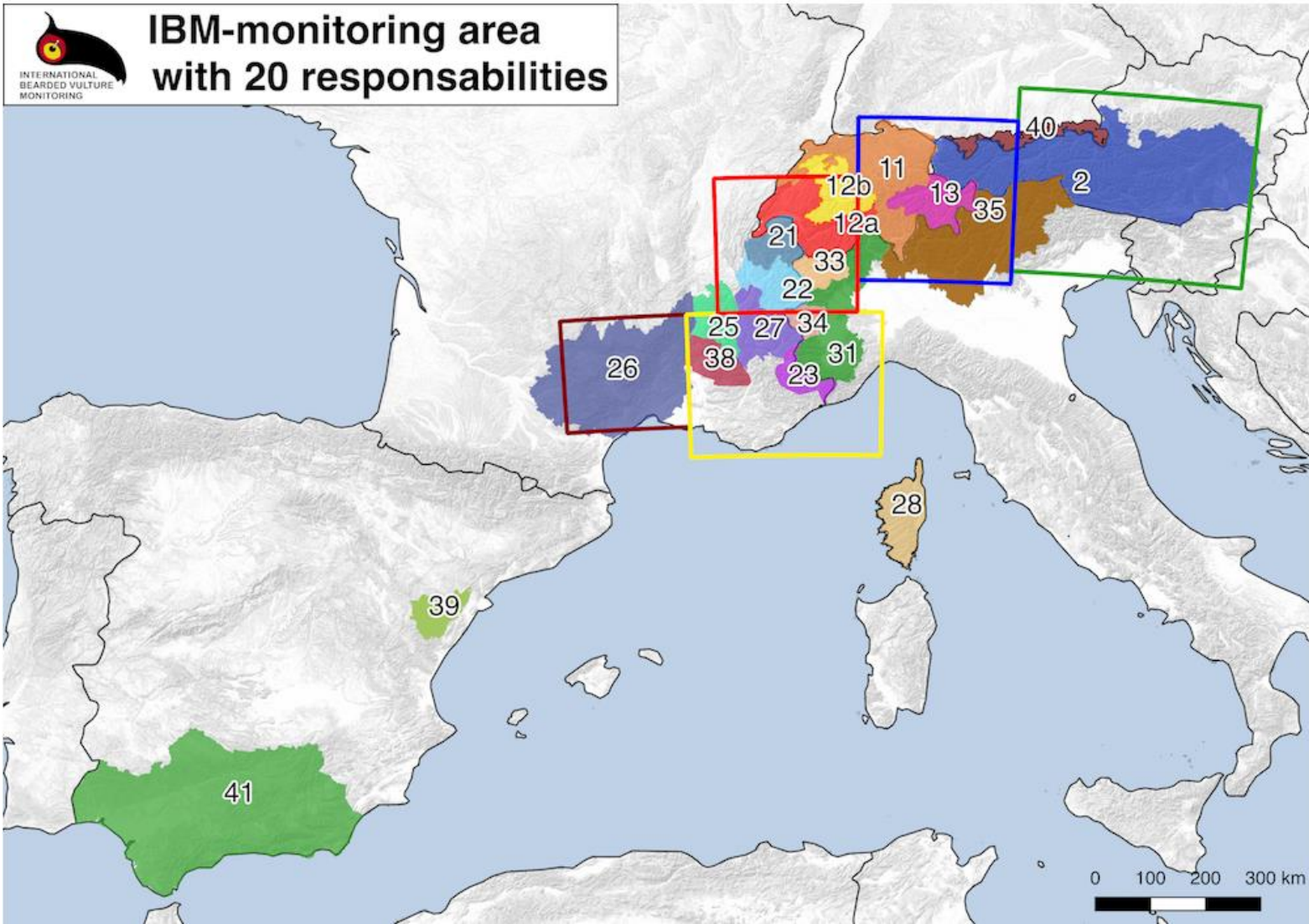


INTERNATIONAL
BEARDED VULTURE
MONITORING

International Bearded Vulture Monitoring
© IBM – 26. January 2022

IBM - Bearded Vulture reproduction 2021





20 partenaires : Alpes, Massif central, Corse, Andalousie

Responsables de la mise en œuvre du suivi de l'espèce sur une zone bien précise.

Différents menus :



Vous êtes connecté comme: Etienne Marle (local administrator)

INTERNATIONAL
BEARDED VULTURE MONITORING



Utilisateur

Mot de passe

login

[Newsflash](#) [Observations](#) [Oiseaux](#) [Aires](#) [Reproduction](#) [Génétique](#) [Statistiques](#) [PBT-map](#) [Friendship](#) [Observateurs](#) [Profile](#) [Administrateur](#) [LogOut](#)

- Observations aléatoires
- Liste des individus
- Liste des nids connus
- Echantillons génétiques
- Données GPS
- Statistiques
- Requête
- Suivi de reproduction
- Cartes

De 1980 à 2022 :

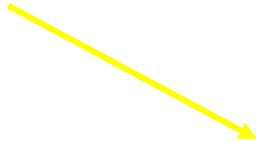
- 83 000 Observations
- 473 Evènements de reproduction

Conservatoire d'espaces naturels
Haute-Savoie



Suivi de la reproduction

Historique des événements de reproduction du couple par an



Résultats clés de la reproduction



Données récurrentes : Localisation territoire, nom des individus...



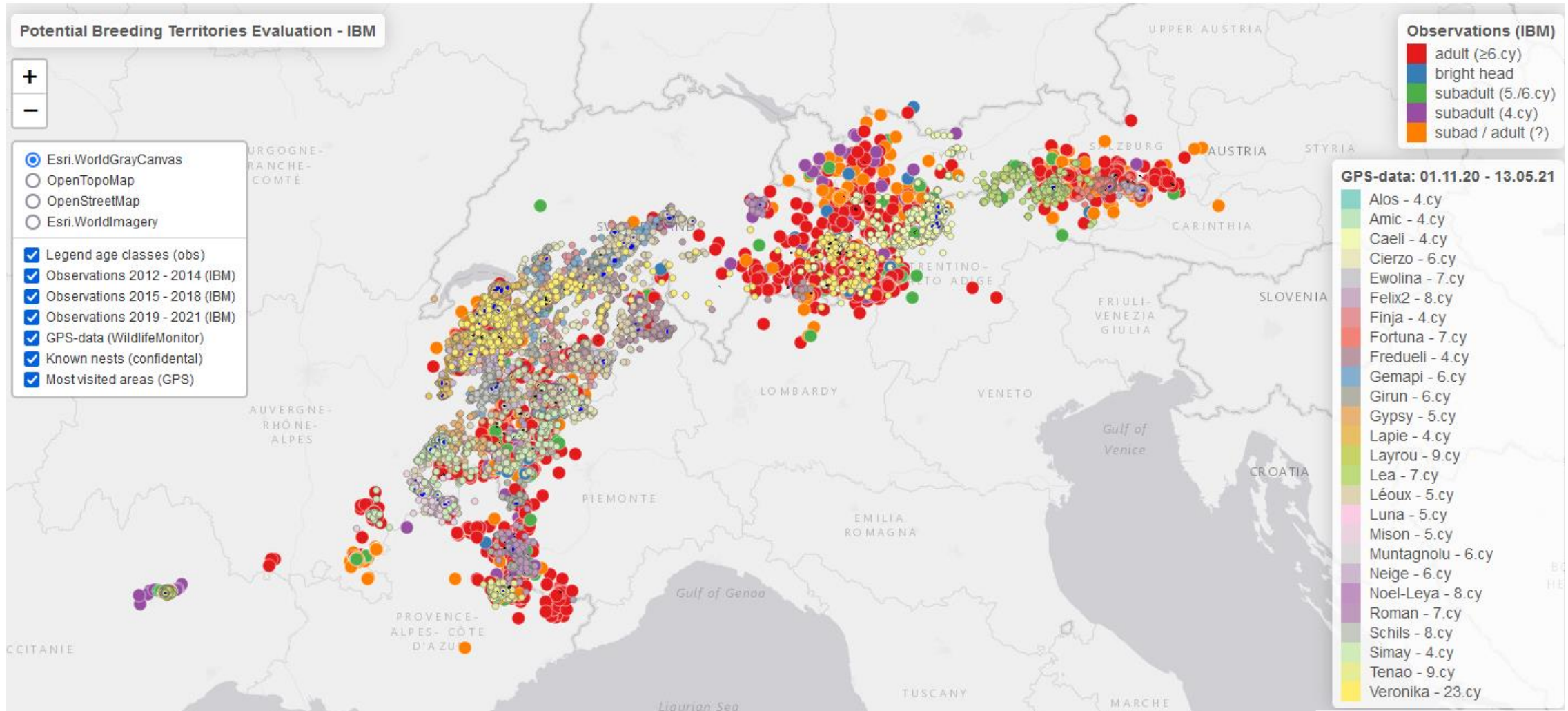
The screenshot shows a web-based interface for tracking bird reproduction. It is divided into several main sections:

- Search and Results:** A sidebar on the left contains search filters (territory name, collection center, season, etc.) and a list of search results for the territory 'Bargy'.
- Identity of the couple:** A central section containing details for the couple 'Bargy' (ID: M-21-0000244), including the season (2012/2013), territory (Alpes), and initial date (15.09.2012).
- Individuals:** A section listing territorial individuals, such as 'Balthazar (099)' and 'Assignat (111)', with their sex and age class.
- Key reproduction data:** A section with input fields for the number of chicks, hatching date, and failure date.
- Territory location:** A section for geographical data, including country (France), region (Rhône-Alpes), and postal code (74130).
- Reproduction observations:** A large section on the right for recording daily observations, including a calendar grid for the season, a table of observation dates, and a section for recording specific behaviors like nest construction and feeding.

Données dynamiques de la saison de reproduction en cours



Cartes



Haute-Savoie

Merci

